



Co-pay Accumulators

Harm Movement Disorder Patients

Patients who need high-cost drugs may use co-pay cards to afford their treatment... and help pay down their annual deductible.



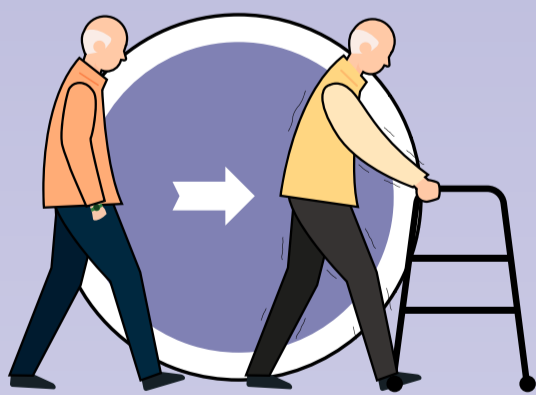
But some insurers no longer count co-pay cards toward patients' annual deductibles.

When the cards run out, patients face big out-of-pocket bills.



Patients may have to choose between their medication and everyday necessities.

Abandoning their medication can lead to:



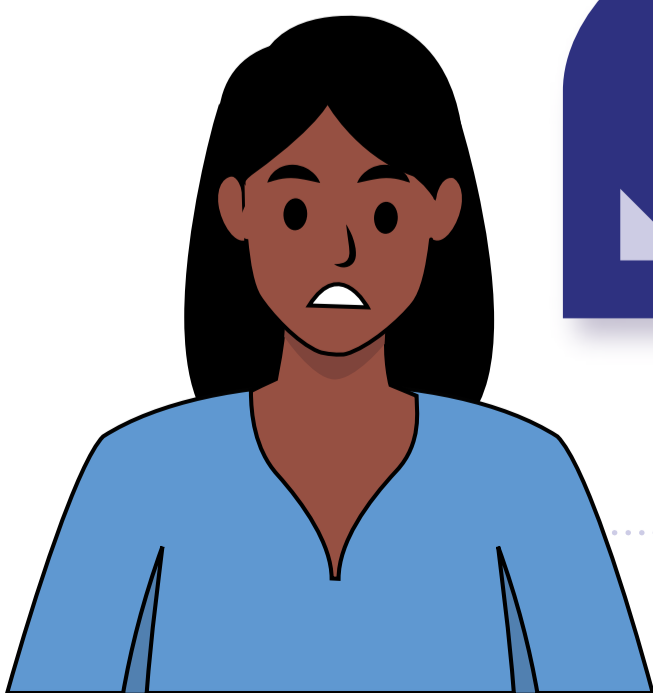
Unchecked physical symptoms



Worsening mental health



Disease progression



Co-pay accumulators are dangerous to movement disorders patients' health.